

SWELLSEAL[®]

Waterstops for Sheet Piles



W a t e r p r o o f i n g t h e W O R L D

dh **de neef[®]**
CONSTRUCTION CHEMICALS, INC.

THE NEED TO SEAL SHEET PILES

The Problem

As the use of sheet piling in wet environments increases, so does the need to create a safe, dry work area after excavation. The high cost of dewatering and treatment, as well as increased concerns for worker safety and potential damage to the surrounding eco-system pose a challenge to both the designer and contractor.

The Solution

SWELLSEAL® WA, hydrophilic polyurethane, offers a safe clean method of sealing sheet piling without the use of hazardous chemicals. Formulated to swell upon contact with water, hydrophilic polyurethanes can expand to any shape to form a seal against water leaking through the interlocks and penetrations in sheet piles.



Swellseal® WA applied with caulking gun

SWELLSEAL® WA

SWELLSEAL® WA is a single component hydrophilic polyurethane that can be applied in wet or dry environments. Upon contact with ground water, it can swell 2 or more times its original volume. When applied to the interlocks of sheet piling, it can swell to seal a leaking interlock in the sheet



Swellseal® WA after driving sheet piles

SWELLSEAL® WA Advantages:

- Easy to install gunnable paste
- No cure time required prior to driving sheets
- Can be applied to wet or dry surface
- Can be applied at cold temperatures
- Can wet and dry cycle repeatedly
- Can be applied to rough surfaces

SWELLSEAL® WA PRODUCT PROPERTIES

UNCURED		
Solids	100%	
Viscosity	Paste	
Density	1.45	ASTM D-3574-95
Flash point	>266° F	ASTM D-93
CURED		
Elongation at break	625%	ASTM D-3574-95
Tensile Strength	Approximately 312 psi	ASTM D-412



Withstands head pressures in excess of 330 ft.

SWELLSEAL® WA Properties:

- Single component hydrophilic polyurethane
- 200% Expansion in water
- Withstands pressures in excess of 330 ft. of head pressure
- Good chemical resistance
- Tenacious bond to wet and dry surfaces
- Conforms to the shape of the interlock
- Does not hinder the removal of sheet piles



Tieback sealed with ***HYDRO ACTIVE® CUT***

REPAIR

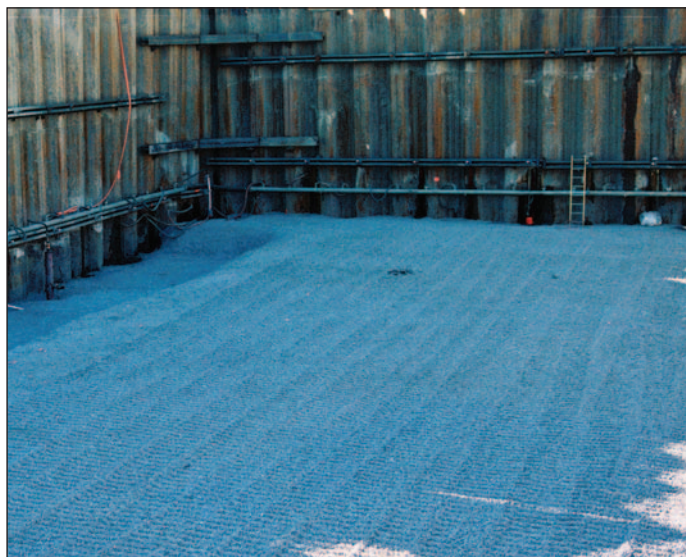
Properties and Advantages:

Leaks that appear after sealing sheets can be repaired with ***HYDRO ACTIVE® CUT***. Applied in liquid form by injection or saturation methods. ***HYDRO ACTIVE® CUT*** swells up to 20 times its original volume to cut off flowing water and seal active leaks.

Ideal Repair Applications

- Tiebacks
- Pipe penetrations
- Flowing water leaks

INSTALLATIONS

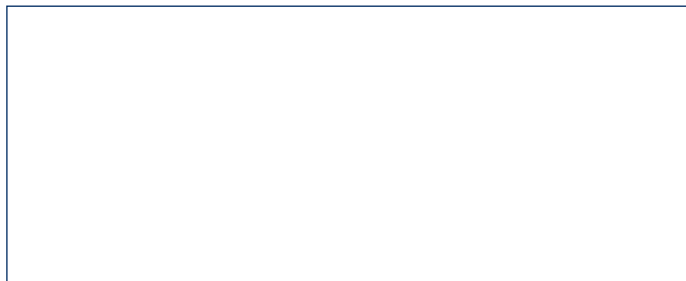


PACKAGING

SWELLSEAL® WA

- 10.5 ounce Tubes
- 20 ounce Sausage

LOCAL DISTRIBUTOR



Waterproofing the WORLD



DE NEEF CONSTRUCTION CHEMICALS

5610 Brystone Drive • Houston, Texas 77041

Tel: 1 713 896 0123 Toll Free: 1 800 732 0166

Fax: 1 713 849 3340 www.deneef.com